

**Dupont Road  
Raynes Park, SW20 8EH**

**£950,000 Freehold**



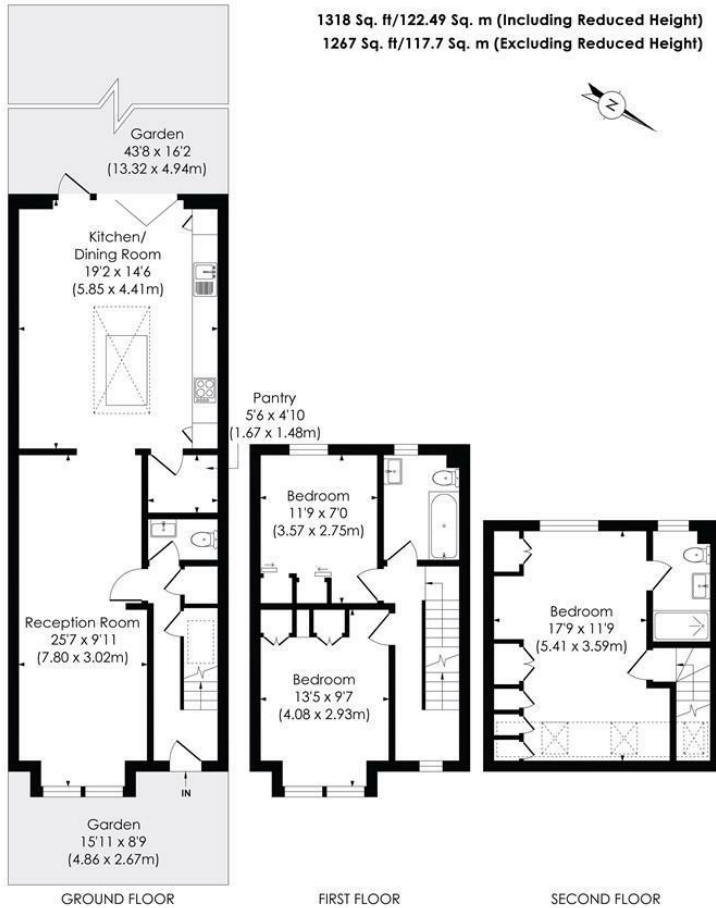
**This fantastic 1,667 sqft THREE DOUBLE BEDROOM, TWO BATHROOM brick fronted, Edwardian Apostle house has an impressive 6m rear extended kitchen/dining room, a utility area, a superb West facing garden and a larger than average reception room. Perfectly positioned in the middle of Dupont Road only 0.4 Miles to Raynes Park Station, High Street and 0.4 Miles to Wimbledon Chase Station and Shops. There is also two good size double bedrooms on the first floor with chimney stacks removed for additional space, a modern family bathroom and a study area in the hall. The loft has been converted creating a spacious principal bedroom with ample storage and en suite shower room.**

**DUPONT ROAD, SW20**

Approx. Gross Internal Floor Area

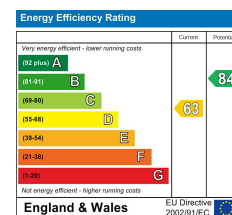
**1318 Sq. ft/122.49 Sq. m (Including Reduced Height)**

**1267 Sq. ft/117.7 Sq. m (Excluding Reduced Height)**



© Pixangle Property Marketing Ltd. info@pixangle.com Tel: 0208 870 2118  
 This floor plan has been prepared for the purpose of illustration only in accordance with the latest RICS code of measuring practice and is not to scale. All measurements and areas are approximate and whilst every effort has been made to ensure the accuracy of the plan contained here, no responsibility is taken for any error, omission or misstatement.

- 1,667 sqft - Three Double Bedroom - Two Bathroom
- Stunning 6m Rear Extended Kitchen/Dining Room
- Large West Facing Garden And Attractive Brick Front
- Spacious Principal Bedroom With En Suite
- Downstairs W.C And Ample Hall Storage
- Larger Than Average Reception Room
- 0.4 Miles To Raynes Park Station And High Street
- 0.4 Miles To Wimbledon Chase Station And Shops
- EPC - D
- Council Tax Band - E



**For Free Mortgage Quote and Best Mortgage Rates, call Ellisons Mortgage Advisor on 0208 944 9595**



Although these particulars are believed to be correct, their accuracy is not guaranteed and they do not form part of any contract.

**Celebrating 30 years of successful Sales and Lettings in Merton**

